



Wind Things Up With Reelcraft

# HOSE REEL

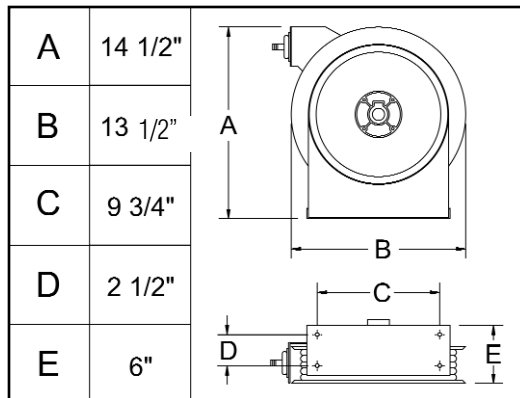
## OPERATING INSTRUCTIONS & PARTS LIST

### MODELS HIGH PRESSURE

5400 OHP	5600 OHP
5420 OHP	5620 OHP
5425 OHP	5625 OHP
5430 OHP	

### SAFETY

- I. Do not use reels at higher pressures or temperatures than listed on the back of this bulletin.
- II. Remove all spring tension before beginning disassembly process.



Four 5/16" Mounting holes.

## INSTRUCTIONS

**INSTALLATION:** A flexible hose connection must be used between the hose reel inlet and the source of supply to prevent possible misalignment and binding.

**MOUNTING:** The hose reel is equipped with a universal mounting bracket so that it can be mounted on the floor, wall or ceiling; whichever place is convenient. The hose guide arm can be moved to the position desired by removing the screws fastening the guide bracket to the reel base. Shift the guide arm bracket so the hose comes off the reel at the desired position and replace the screws.

**LUBRICATION:** Hose reel spring and bearings are factory lubricated and require no further lubrication.

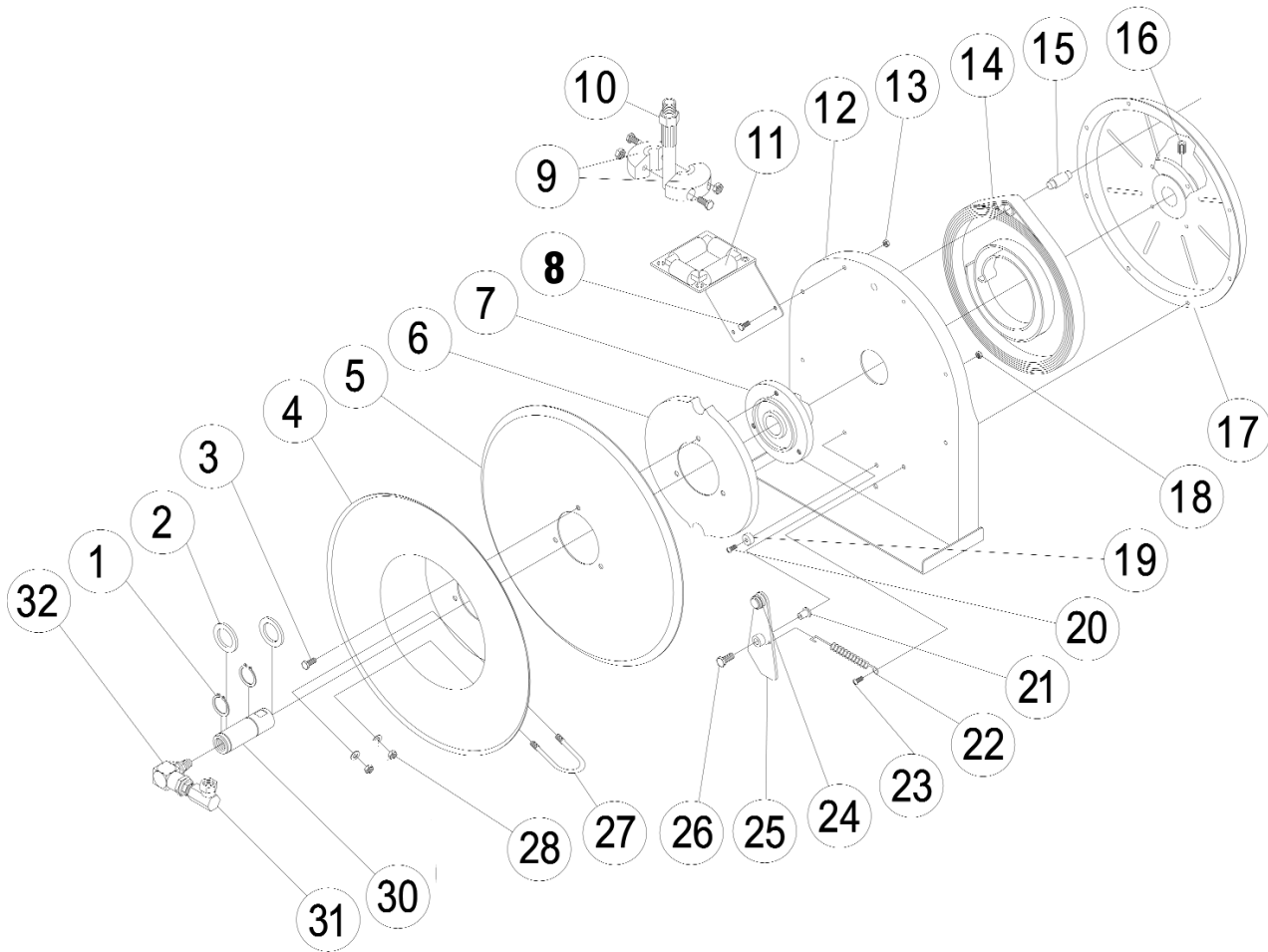
- REPLACING HOSE:**
1. Wind spool flange clockwise-facing swivel-until spring is tight.
  2. Back off three turns and latch.
  3. Insert hose through roller guide and hole in spool flange.
  4. Connect hose fitting to swivel joint and secure hose with clamps.

**ADJUSTMENTS:** To adjust spring tension, add or remove wraps of hose from the spool, one wrap at a time until desired tension is obtained.

**REPAIRS:** Extensive repairs should be performed only by an authorized serviceman or factory to avoid damage which may void your warranty. Remove all spring tension before beginning disassembly process.

# REELCRAFT

Wind Things Up With Reelcraft



ITEM #	PART NO.	NO. REQ.	DESCRIPTION	ITEM #	PART NO.	NO. REQ.	DESCRIPTION	ITEM #	PART NO.	NO. REQ.	DESCRIPTION
1	300031	2	1" Snap Ring	13	300011	7	10-32 Hex Lock Nut	23	300001	5	10-32 x 3/8" Screw
2	300034	2	Spacing Washer	14	S505740	1	Drive Spring Ass'y	24	400020	1	O'Ring
3	S295-102	3	1/4" Plastite Hex Screw	15	S261360	1	Spring Case Stud	25	S400109	1	Latch Plate Ass'y
4	260022	1	Flange Ass'y	16	300006	1	3/8-16 x 1/2" Set Screw	26	300035	1	10-32 x 1" Screw
5	500006	1	Sheave Disk	17	500103	1	Spring Case Ass'y	28	261650-1	2	1/4-20 Zinc Nyloc Nut
6	S500019	1	Latch Cam	18	S82-15	1	#10-32 Nyloc Nut	30	500015	1	Mainshaft
7	S260648	1	Spring Arbor	19	S400021	1	Latch Bumper	31	S257-10	1	Swivel Union
8	300002	2	10-32 x 1/2" Screw	20	S32-136	1	10-32 x 3/8" Screw	32	260042	1	Swivel Ass'y
11	S500107	1	Guide Arm & Roller Ass'y	21	S400012	1	Latch Bushing				
12	500101	1	Base Ass'y	22	S400018	1	Latch Spring				

ITEM #	DESCRIPTION	NO. REQ.	MODEL 5400 OHP	MODEL 5420 OHP	MODEL 5425 OHP	MODEL 5430 OHP	MODEL 5600 OHP	MODEL 5620 OHP	MODEL 5625 OHP
9	Hose Bumper Ass'y	1	None	1-HR1004	1-HR1004	1-HR1004	None	1-HR1004	1-HR1004
10	Hose Ass'y	1	None	6-260044	10-260044	7-260044	None	12-260044	13-260044
27	1/4" U'-Bolt	1	3-117440	3-117440	3-117440	3-117440	3-117440	3-117440	3-117440

Hose I.D. & Length	None	1/4" x 20'	1/4" X 25'	1/4" x 30'	None	3/8" x 20'	3/8" x 25'
Reel Inlet Connection	1/4" F.P.T.	1/4" F.P.T.	1/4" F.P.T.	1/4" F.P.T.	1/4" F.P.T.	1/4" F.P.T.	1/4" F.P.T.
Max. Operating Pressure	9000 P.S.I.	5000 P.S.I.	5000 P.S.I.	5000 P.S.I.	9000 P.S.I.	4000 P.S.I.	4000 P.S.I.
Max. Operating Temperature	210°F	210°F	210°F	210°F	210°F	210°F	210°F